



EXCLUSIVE 444

BLOCK A,B,C
FLAT LAYOUTS





1st to 11th Floor Plan

BLOCK - A

A101

1480.0 sqft

3 BHK



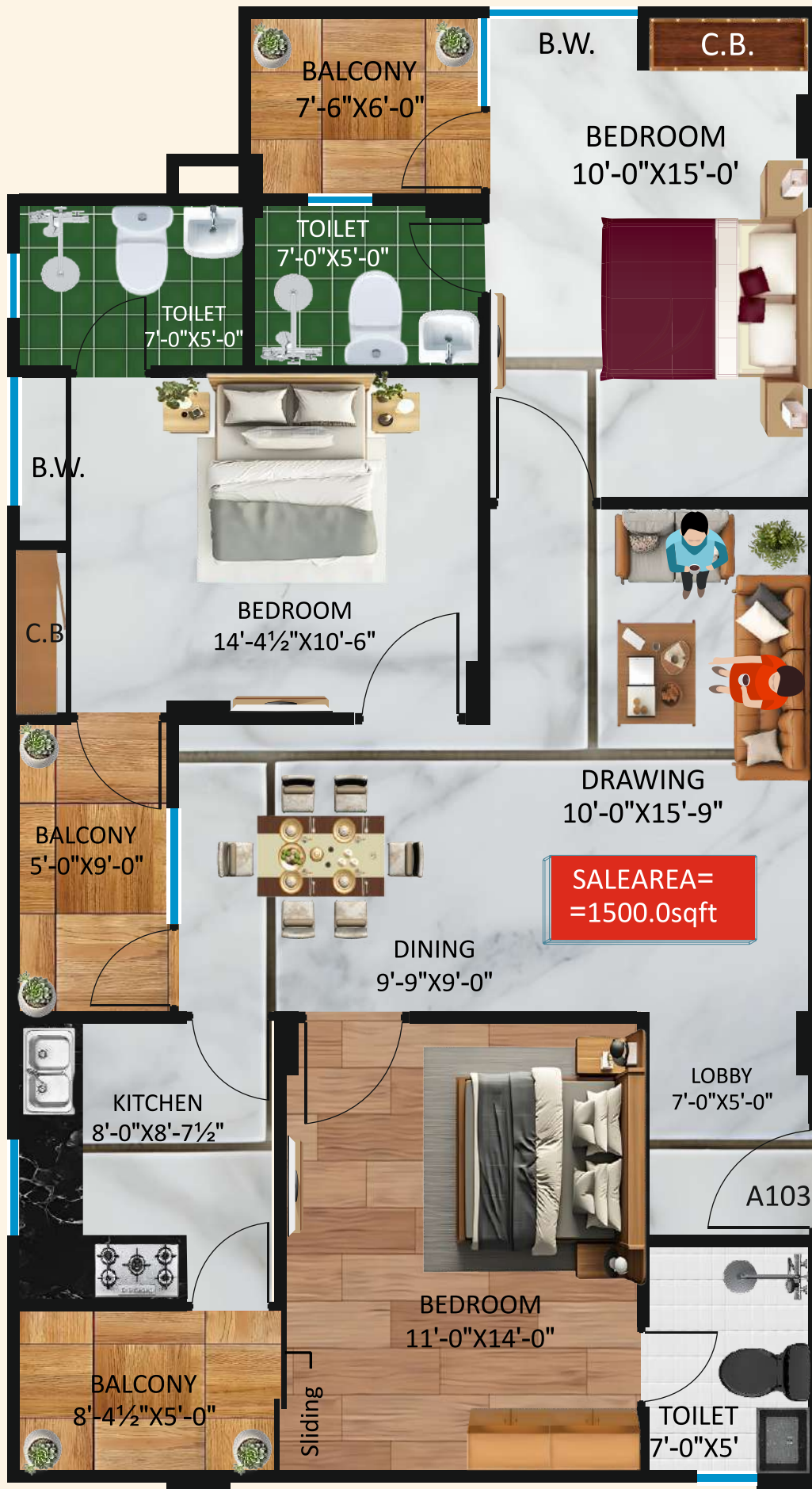
1st to 11th Floor Plan

BLOCK - A

A102

1485.0 sqft

3 BHK



1st to 11th Floor Plan

BLOCK - A

A103

1500.0 sqft

3 BHK



1st to 11th Floor Plan

BLOCK - A

A104

1505.0 sqft

3 BHK



1st to 11th Floor Plan

BLOCK - A

A105

1140.0 sqft

2 BHK



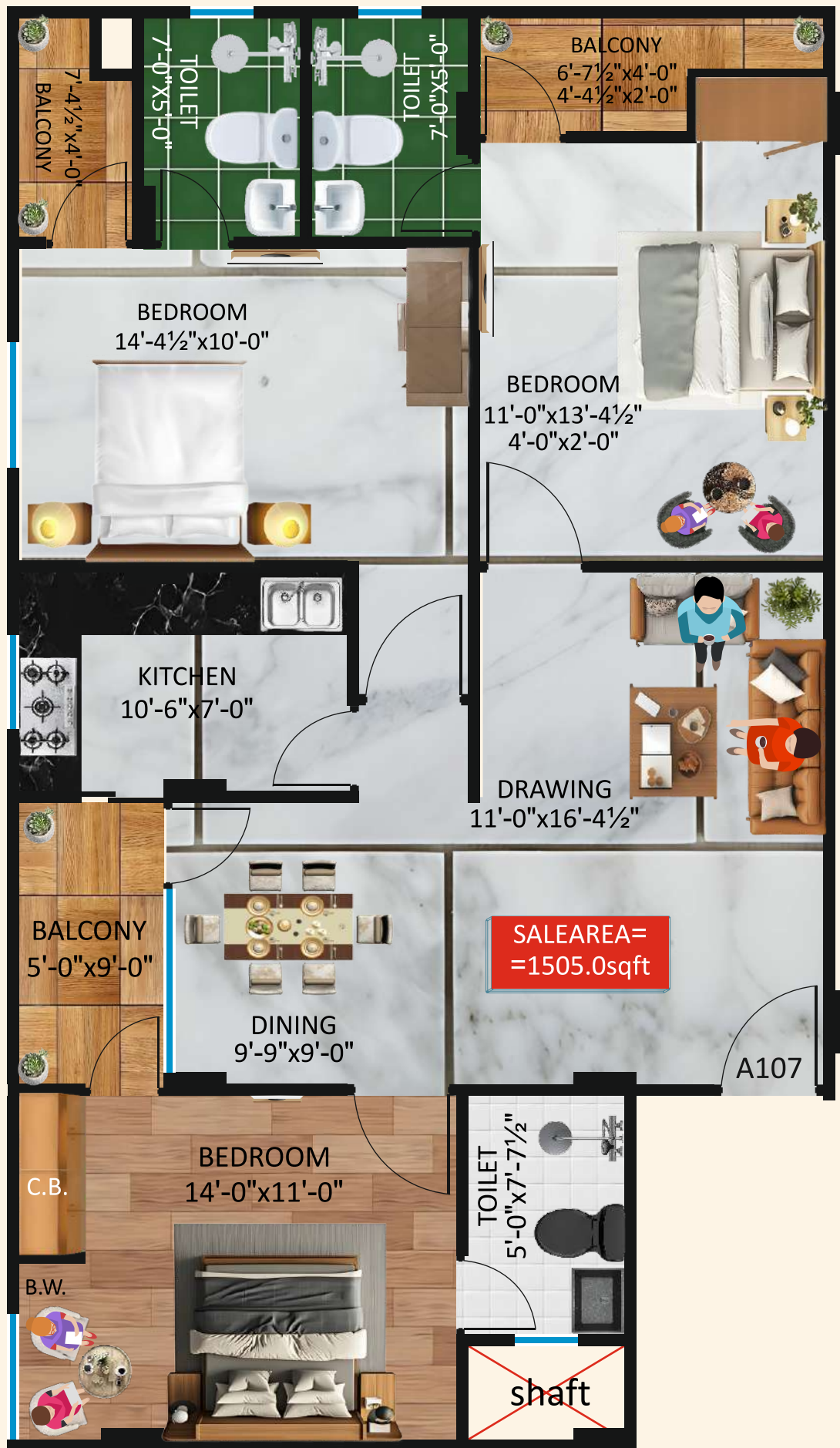
1st to 11th Floor Plan

BLOCK - A

A106

1140.0 sqft

2 BHK



1st to 11th Floor Plan

BLOCK - A

A107

1505.0 sqft

3 BHK



1st to 11th Floor Plan

BLOCK - A

A108

1500.0 sqft

3 BHK



1st to 11th Floor Plan

BLOCK - A

A109

1485.0 sqft

3 BHK



1st to 11th Floor Plan

BLOCK - A

A110

1480.0 sqft

3 BHK



1st to 11th Floor Plan

BLOCK - A

A111

2540.0 sqft

4 BHK



1st to 11th Floor Plan

BLOCK - A

A112

2070.0 sqft

4 BHK



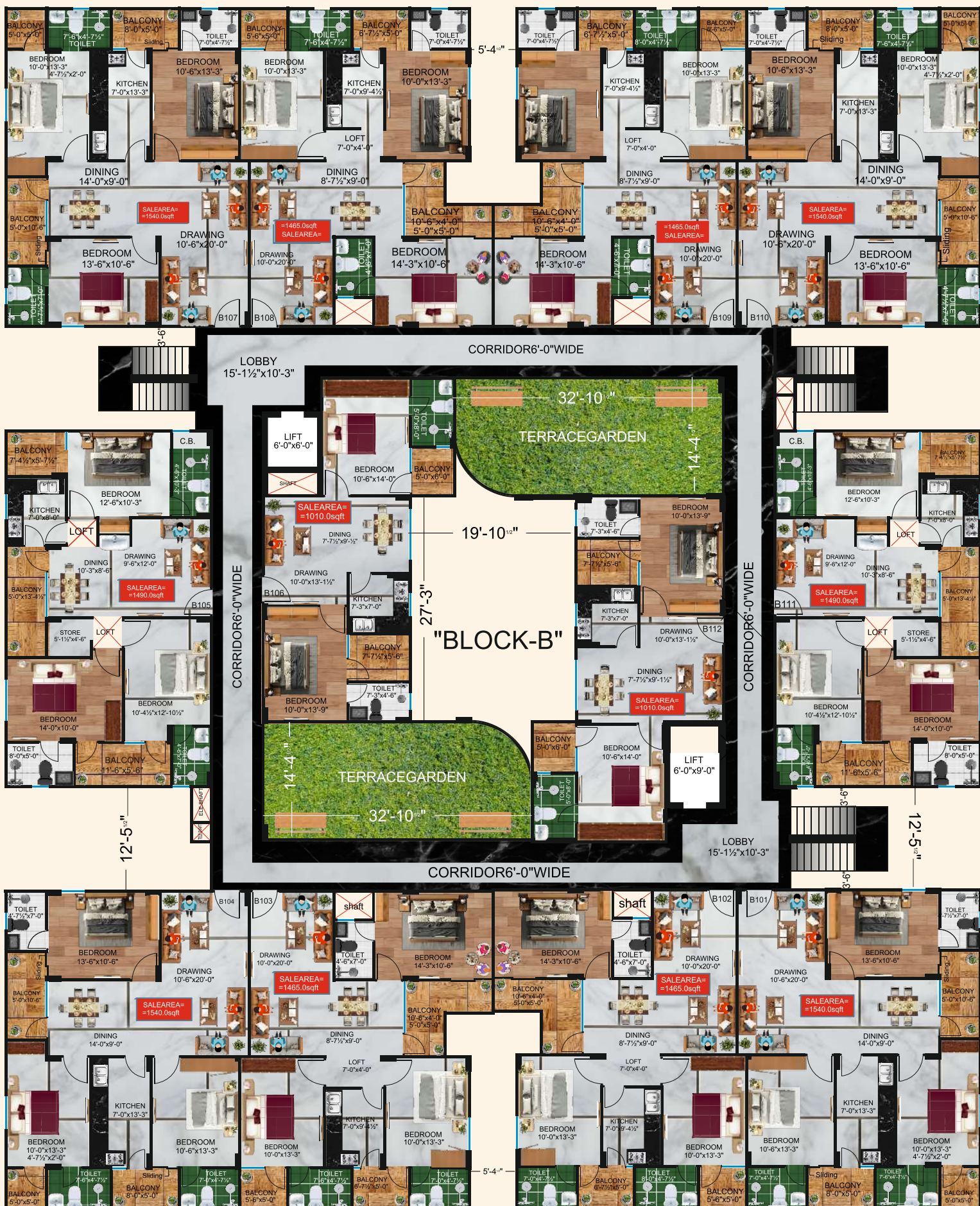
1st to 11th Floor Plan

BLOCK - A

A113

2540.0 sqft

4 BHK



FLOOR PLAN BLOCK-B



1st to 11th Floor Plan

BLOCK - B

B101

1540.0 sqft

3 BHK



1st to 11th Floor Plan

BLOCK - B

B102

1465.0 sqft

3 BHK



1st to 11th Floor Plan

BLOCK - B

B103

1465.0 sqft

3 BHK



1st to 11th Floor Plan

BLOCK - B

B104

1540.0 sqft

3 BHK



1st to 11th Floor Plan

BLOCK - B

B105

1490.0 sqft

3 BHK



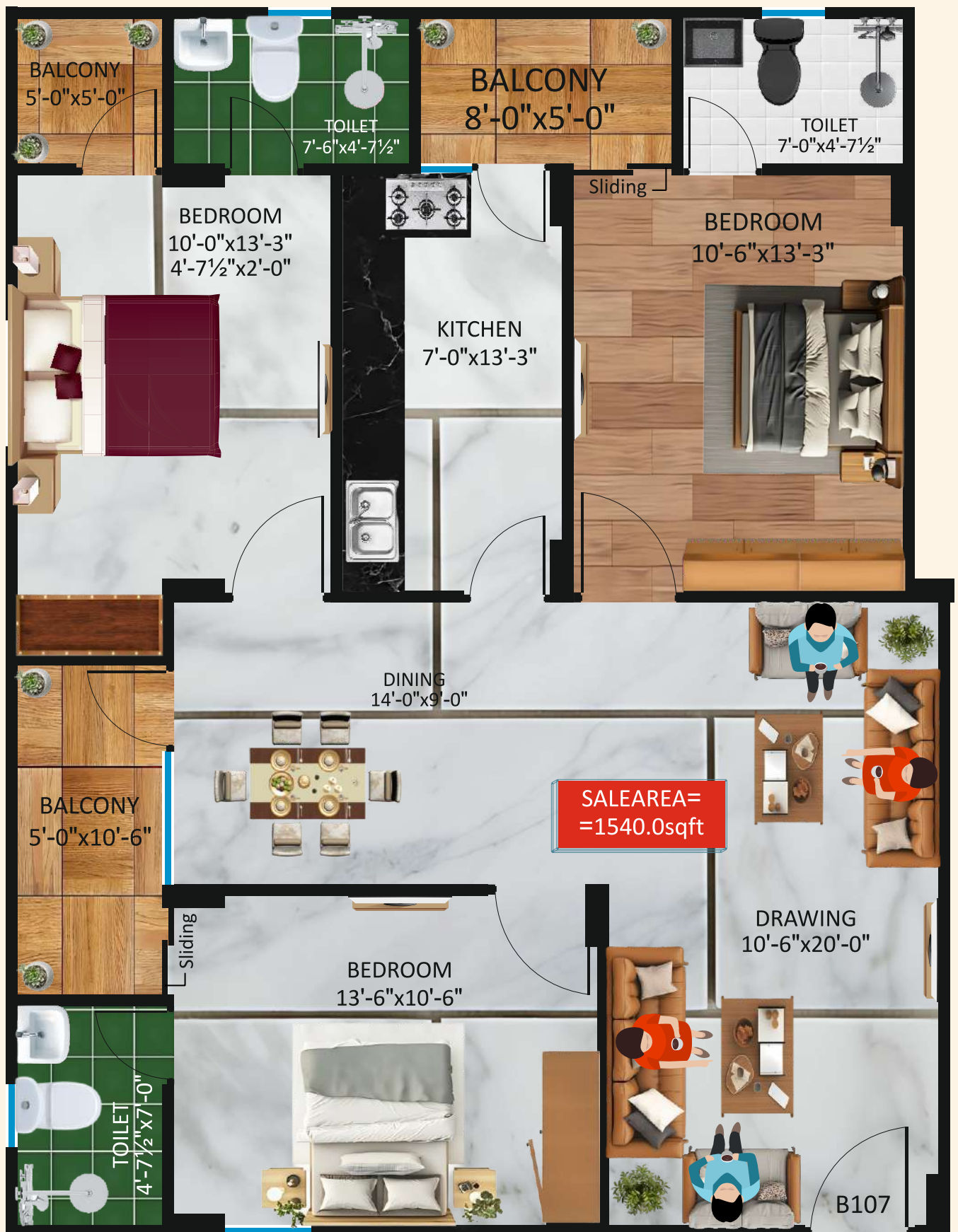
1st to 11th Floor Plan

BLOCK - B

B106

1010.0 sqft

2 BHK



1st to 11th Floor Plan

BLOCK - B

B107

1540.0 sqft

3 BHK



1st to 11th Floor Plan

BLOCK - B

B108

1465.0 sqft

3 BHK



1st to 11th Floor Plan

BLOCK - B

B109

1465.0 sqft

3 BHK



1st to 11th Floor Plan

BLOCK - B

B110

1540.0 sqft

3 BHK



1st to 11th Floor Plan

BLOCK - B

B111

1490.0 sqft

3 BHK



1st to 11th Floor Plan

BLOCK - B

B112

1010.0 sqft

2 BHK





1st to 11th Floor Plan

BLOCK - C

C101

1070.0 sqft

2 BHK



1st to 11th Floor Plan

BLOCK - C

C102

1120.0 sqft

2 BHK



1st to 11th Floor Plan

BLOCK - C

C103

650 sqft

1 BHK



1st to 11th Floor Plan

BLOCK - C

C104

650.0 sqft

1 BHK



1st to 11th Floor Plan

BLOCK - C

C105

650.0 sqft

1 BHK



1st to 11th Floor Plan

BLOCK - C

C106

650.0 sqft

1 BHK



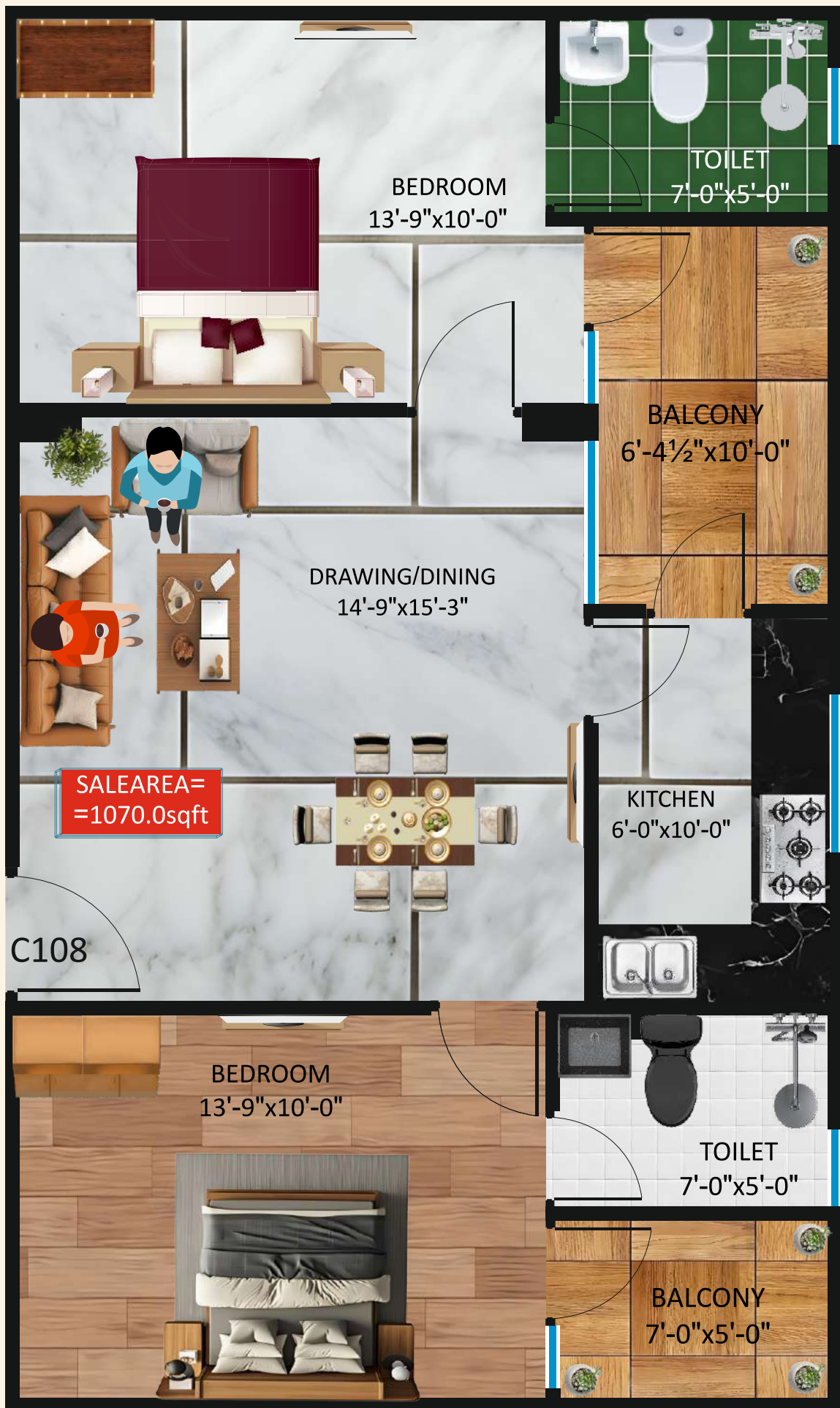
1st to 11th Floor Plan

BLOCK - C

C107

1120.0 sqft

2 BHK



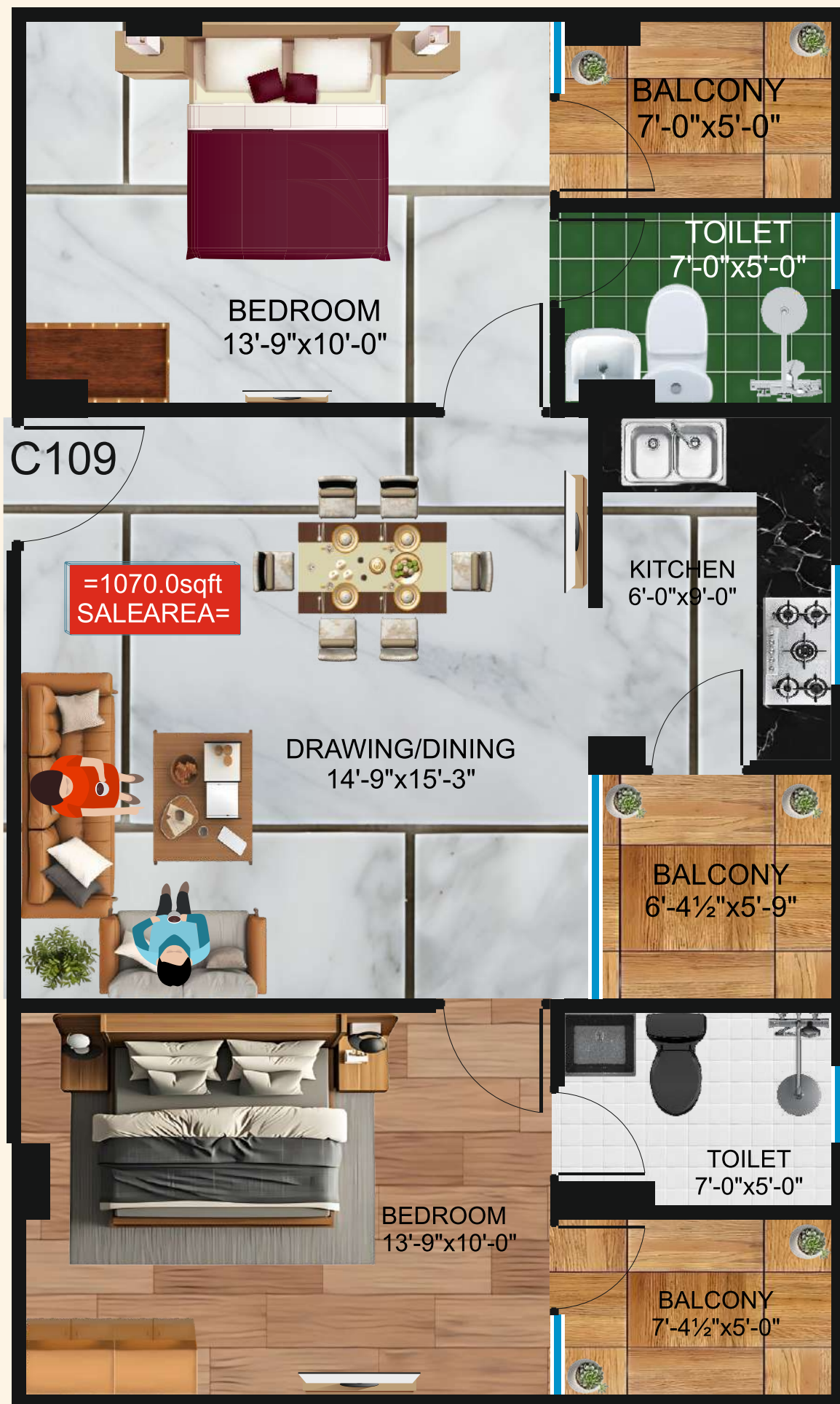
1st to 11th Floor Plan

BLOCK - C

C108

1070.0 sqft

2 BHK



1st to 11th Floor Plan

BLOCK - C

C109

1070.0 sqft

2 BHK



1st to 11th Floor Plan

BLOCK - C

C110

735.0 sqft

1 BHK



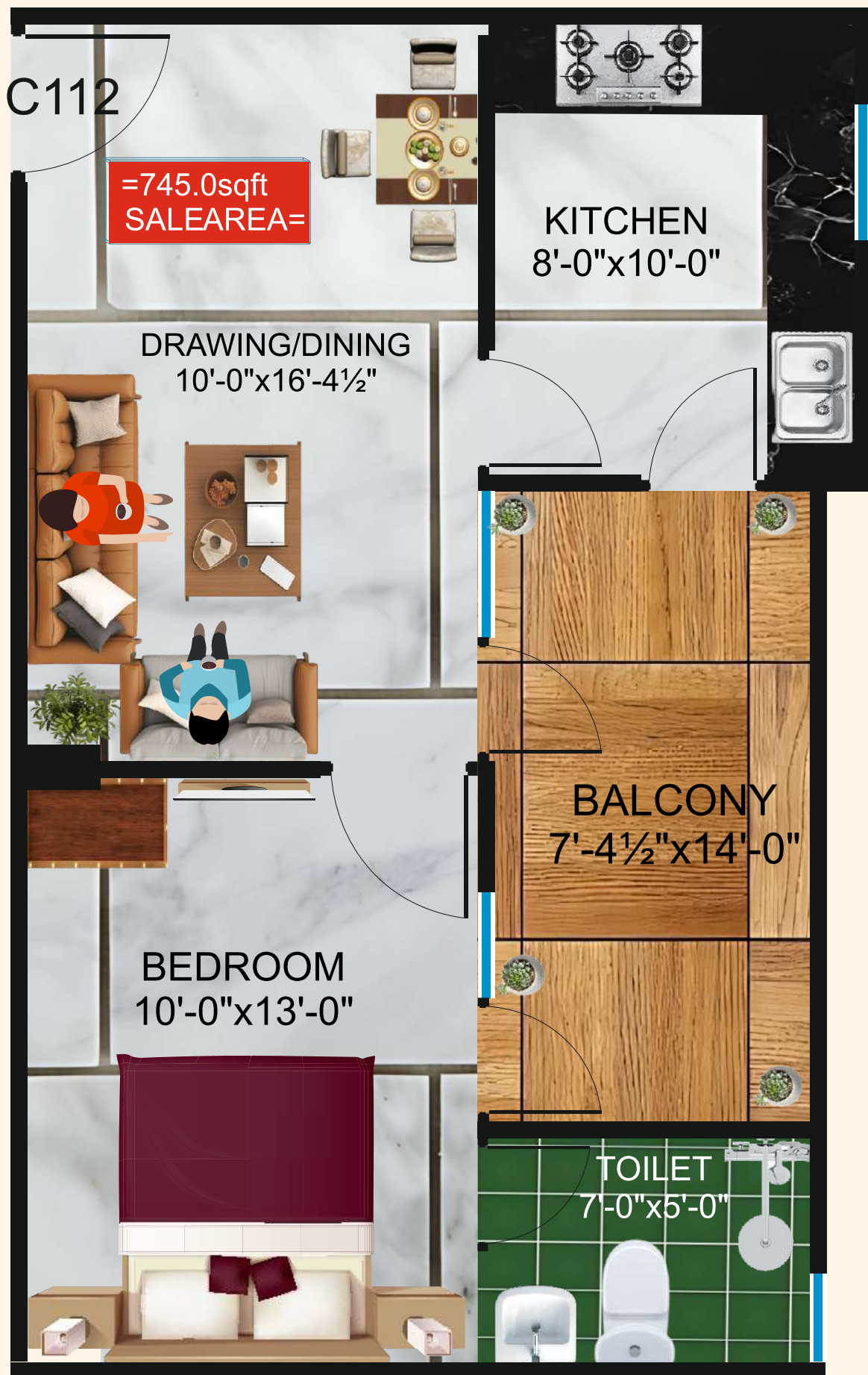
1st to 11th Floor Plan

BLOCK - C

C111

745.0 sqft

1 BHK



1st to 11th Floor Plan

BLOCK - C

C112

745.0 sqft

1 BHK



1st to 11th Floor Plan

BLOCK - C

C113

735.0 sqft

1 BHK



1st to 11th Floor Plan

BLOCK - C

C114

1070.0 sqft

2 BHK

For Enquiry : 7877711222



An ISO 9001:2008 Certified Company

Regd. Office : V.N. BUILDTECH PRIVATE LIMITED Exclusive 444, Khasra No. 705/1, 705/2, 703, 706, Village Shrikishanpura, Jagatpura, Jaipur-303905, Rajasthan, India Custome Care : 78 777 11 222

Site. Office :

Exclusive 444, Khasra No. 705/1, 705/2, 703, 706, Village Shrikishanpura, Jagatpura, Jaipur-303905, Rajasthan, India

E-mail : info@vnbuildtech.com | www.vnbuildtech.com



Disclaimer: This brochure is not a legal document. The content herein describes the conceptual plan to convey the intent & purpose of the project. All dimensions are approximate and are subject to construction variances. The pictorial representations including that of buildings, towers, facilities and amenities are artistic impression and are only indicative of the envisaged developments and actual product may from what is indicated herein. The relationship between the Promoter/Developer and the actual customers will be governed strictly by the agreements to be executed from time to time and not on the terms of this brochure/advertisement and or any other promotional document. Please refer to the template of Agreement for Sale (available on www.rera-rajasthan.in) or approach our sales representative available at V,N, Buildtech Pvt. Ltd. Exclusive 44 4, Khasra No. 705/1, 705/2, 703, 706, Village Shrikishanpura, Jagatpura, Jaipur- 303905, Rajasthan, India to know about Promoter's/Developer's legal offering and its contractual obligation in respect of purchase of flats/units in the Project.